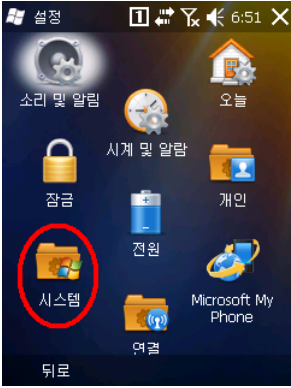
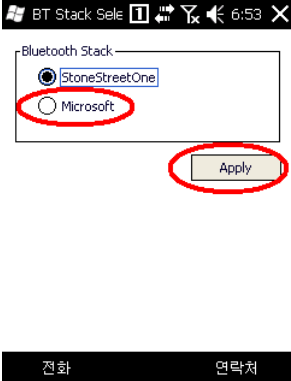


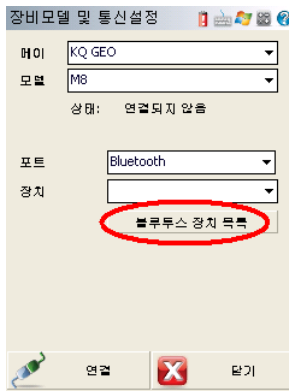
Connection Procedure between FieldGenius, KQ GEO M8 and M3 Data Collector

Switch Bluetooth Stack to Microsoft

| | |
|--|--|
| <p>1. Select "Settings"</p>  | <p>2. Select "System"</p>  |
| <p>3. Select "BT Select"</p>  | <p>4. Select "Microsoft" option and press "Apply" button to reboot data collector</p>  |
| <p>5. Select "Yes" to reboot</p>  | |

Connect FieldGenius to Instrument

1. Configure the instrument and select “Bluetooth Device List” button



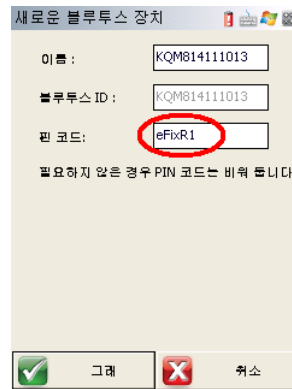
2. Select “Search”



3. Select the desired instrument from the list of found Bluetooth devices



4. Enter the PIN code “eFixR1”



5. Select “Connect”



6. Connected!

