

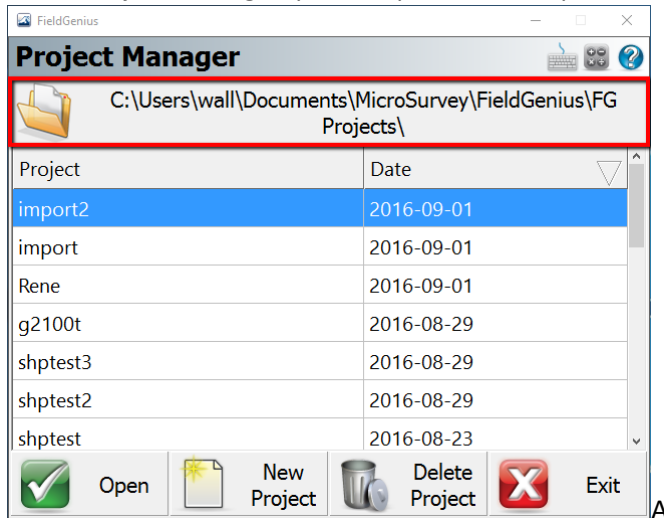
# CS20 data transfer to/from MSCAD

## Setup folder on CS20

1. Open “My Device” on CS20 desktop screen
2. Navigate to **Program Files > MicroSurvey FieldGenius**
3. Select the **FG Projects** folder
4. From the **Edit** menu pick **Copy**
5. Navigate back up to “My Device” in the folder tree, then to **Leica Geosystems > Leica Captivate**
6. From the **Edit** menu pick **Paste**
7. Close the File Explorer

## Set FieldGenius to use the new folder

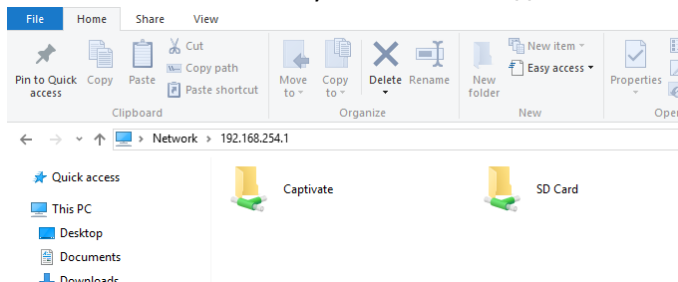
1. Run FieldGenius
2. In the Project Manager, pick the path at the top of the screen:



3. Set the path to the new folder at **Leica Geosystems > Leica Captivate > FG Projects**
4. Load a job to confirm files are accessible

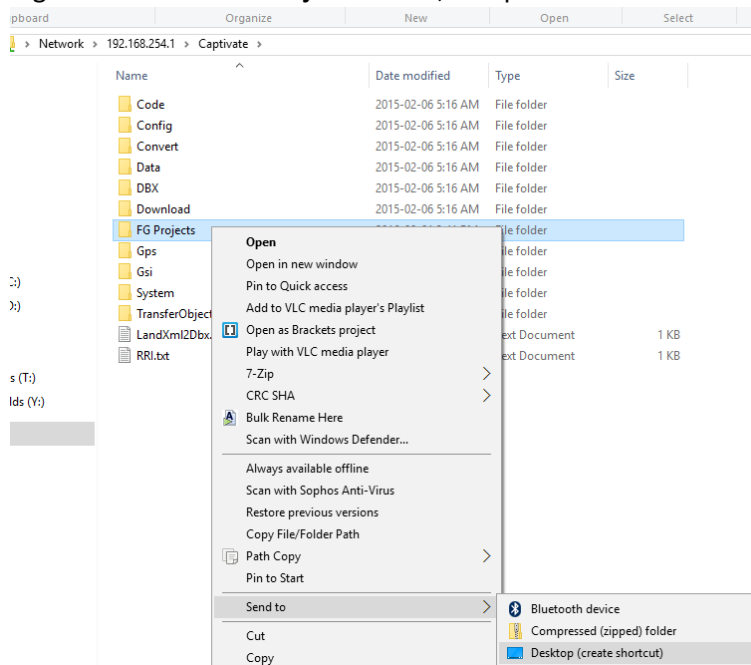
## Setup CS20 to connect to PC

1. Follow the instructions from Leica’s document titled “How to connect a CS20, TS16, TS60 or MS60 to a PC via USB\_2.pdf” to connect CS20 to your PC via USB cable.
2. The result should be that you can browse **\\192.168.254.1** via Windows Explorer:

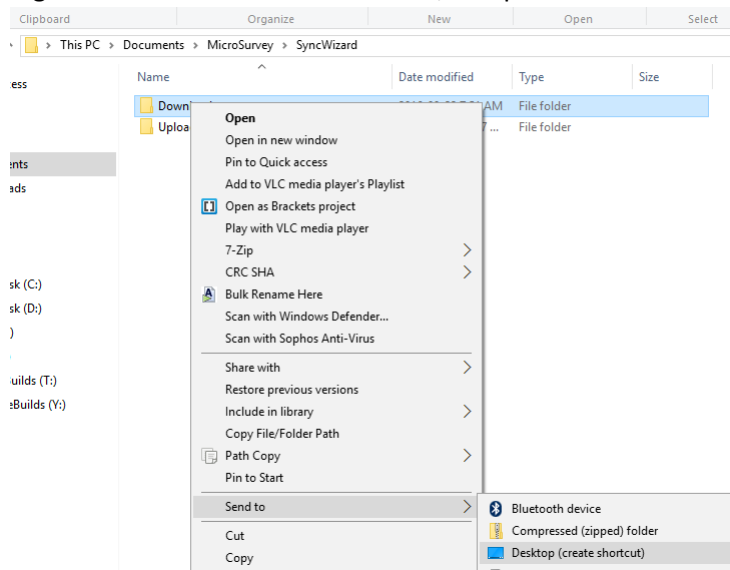


## Create shortcuts to folders

1. Open the Captivate folder from the CS20 device explorer window
2. Right-click on the **FG Projects** folder, and pick **Send to > Desktop (create shortcut)**

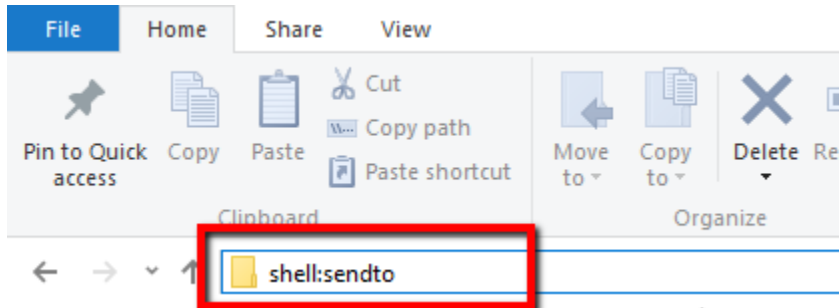


3. In Windows Explorer navigate to your **Documents > MicroSurvey > SyncWizard** folder
4. Right-click on the **Downloads** folder, and pick **Send to > Desktop (create shortcut)**

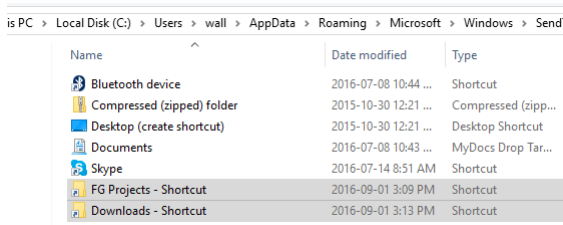


## Setup Windows “Sendto” shortcuts

1. In Windows Explorer’s address bar type “shell:sendto”:



2. This will open the “Send To” shortcut list
3. Drag the shortcuts from your desktop that you created in the previous section to this folder, the result should look similar to:

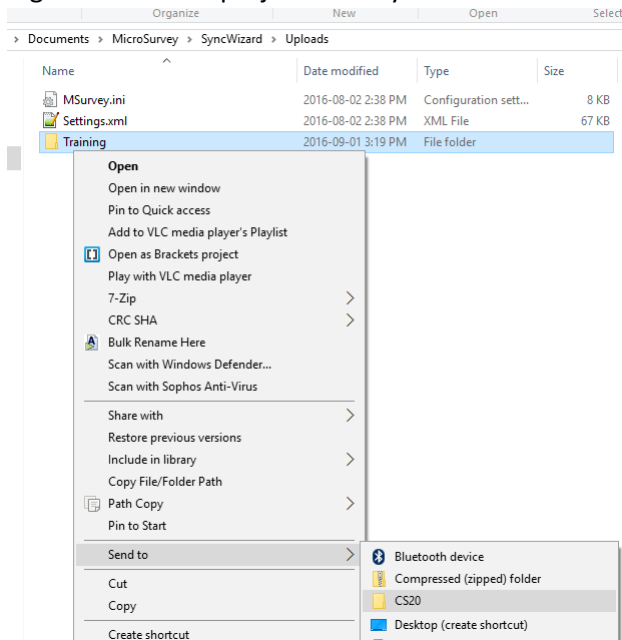


4. Rename the shortcuts to something more intuitive, such as “CS20” and “SyncWizard” or similar

## Procedure for uploading to CS20

With the shortcuts and everything in place, once you are ready to upload a FieldGenius project to the CS20:

1. Navigate to your **Documents > MicroSurvey > SyncWizard > Uploads** folder where MSCAD has exported the project to
2. Right-click on the project folder you wish to transfer and choose **Send to > CS20**



## Procedure for Downloading from CS20

With the shortcuts and everything in place, once you are ready to download a FieldGenius project from the CS20:

1. Open the `\\192.168.254.1 \> Captivate > FG Projects` folder via Windows Explorer
2. Right-click on the job folder you want to download and choose **Send to > SyncWizard**:

