

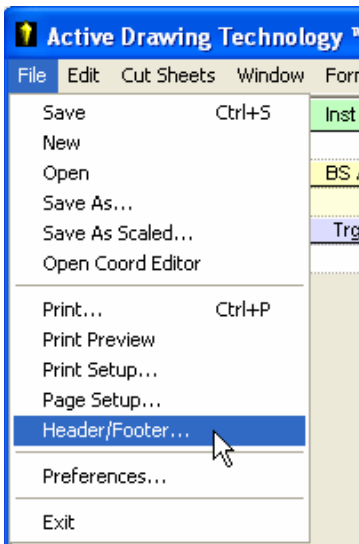
April 4, 2006

Headers and Footers

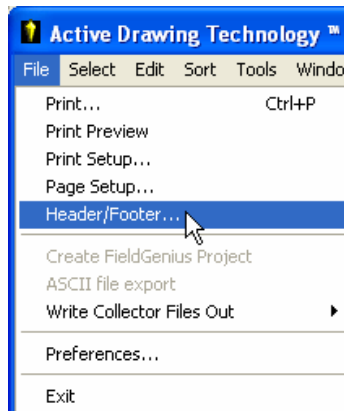
In both the **Active Coordinate Editor** and the **Active Traverse Editor**, you have the ability to setup and print headers and footers with your documents.

When in either dialog (Active Drawing Technology), go to the file pulldown menu and pick on Header/Footer.

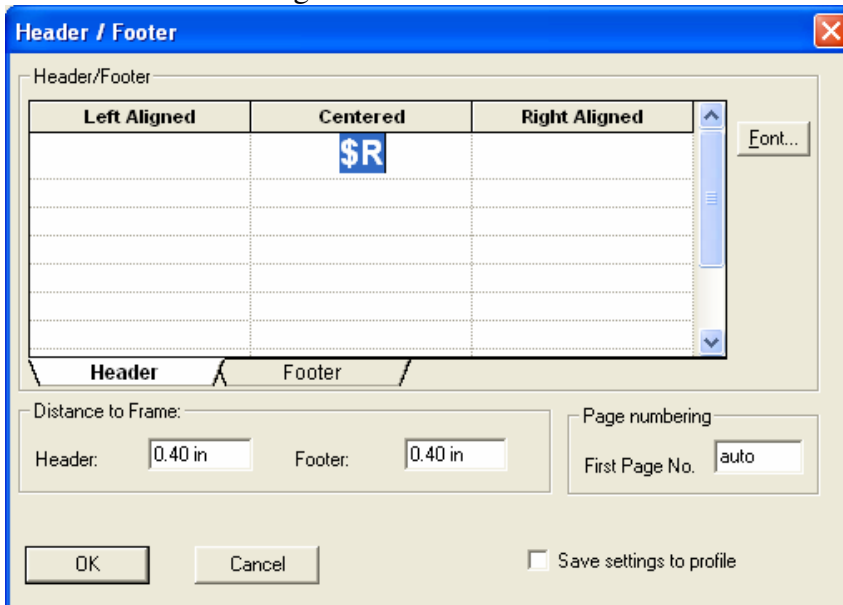
Active Traverse Editor



Active Coordinate Editor



You will see this dialog:



You can have 3 different columns of information printed as part of the document, in the header. Left Aligned, Centered and Right Aligned. Each of these columns can have several lines of text, if desired. Anything you type in here will automatically be placed at the top of every sheet printed.

There are also a few special codes that can help customize the printout. The default above shows the code \$R being centered in the header. This code actually does not do anything within our program but was a default inserted by the original program code that we purchased.

A code that does work quite well is \$F. If you change the header to \$F from \$R, when you print the document you will get a header something like this on your printout:

In the Active Traverse Editor: It displays the Job name and the Traverse name.

Traverse Editor : TDS-44.dwg\63115A15

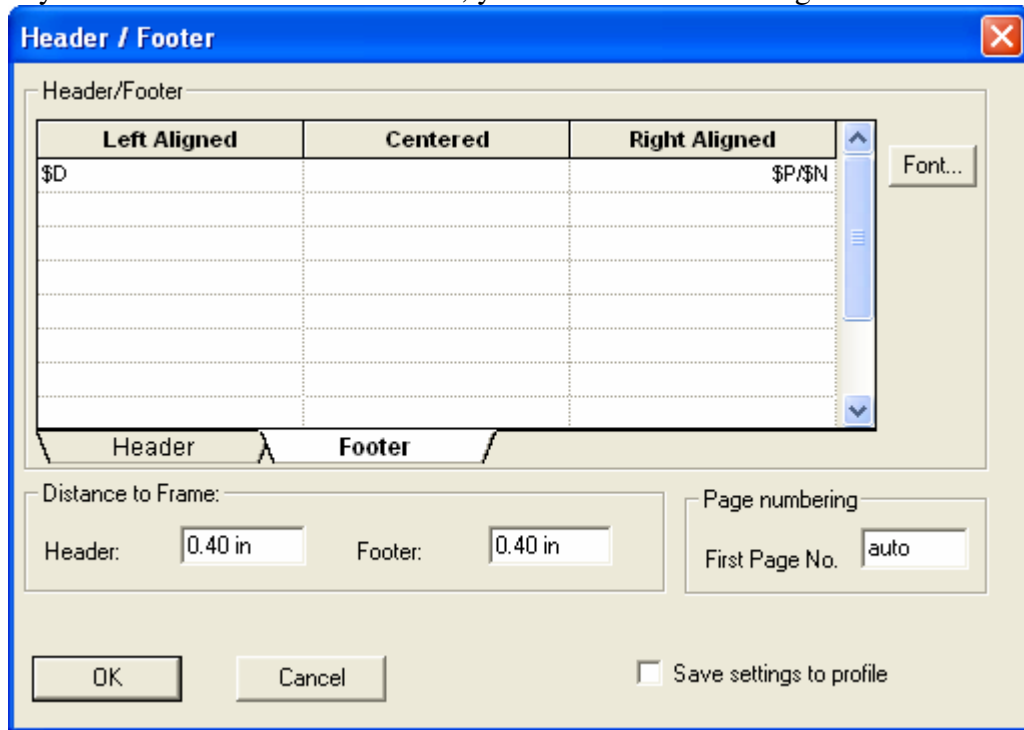
Job Desc	Crew	Inst Num	Temp	Pressure	Start Date
Note	Surv CE Version 1.50.007				10/24/2006
Note	CRD: Numeric				
Note	Equipment: Leica Robotic Total Station				

In the Active Coordinate Editor: It displays the Job name.

Coordinate Editor : TDS-44

Point	Northing	Easting	Elevation	Description	Protect	Audio	History
4000	56.808	129.883	0.778	NL	<input type="checkbox"/>		
4001	54.850	72.555	0.862	CHK 100	<input type="checkbox"/>		
4002	156.740	150.046	329.520	IFH	<input type="checkbox"/>		
4003	84.623	136.427	1.164	CHK FF	<input type="checkbox"/>		

If you switch over to the Footer tab, you will see the following:



You can see a few other special codes that we default with.

\$D displays the date and time of the printout

\$P displays the Current Page number of the printout

\$N displays the number of pages being printed.

These same codes can be used in the footer, or the header, if desired.

Here is what the footer would print like from either Active Drawing Technology dialog:



A review of the special codes available, that work in the Active Drawing Technology dialogs:

\$F = File name of the document

\$P = Current Page number

\$N = Total Number of pages

\$D = Date Time or Printout

You can also specify the distance from the edge of the paper to the start of the header, and the distance from the end of the footer to the edge of the page (Distance to Frame).

Glen W. Cameron, C.E.T.
Technical Support Manager