

## “Zoom Extents” shows a blank screen.

This is sometimes accompanied by a frozen cursor in the drawing area.

It may be that that your drawing has some points, text or line work out near Mars (coordinates with very large values that may have been added, or moved there, accidentally.) If the cursor is frozen you can't zoom and pan to find the points causing the problem. We just need to fool MSCAD into zooming in on your drawing, and erasing everything outside your view.

The steps differ slightly for MSCAD 2002, MSCAD 2004 and MSCAD 2005, and are detailed individually below.

*\* You should ensure that you have a copy of the drawing saved to a safe location on your hard drive (maybe even with another name), just in case you do something wrong, so you do not lose any important information.*

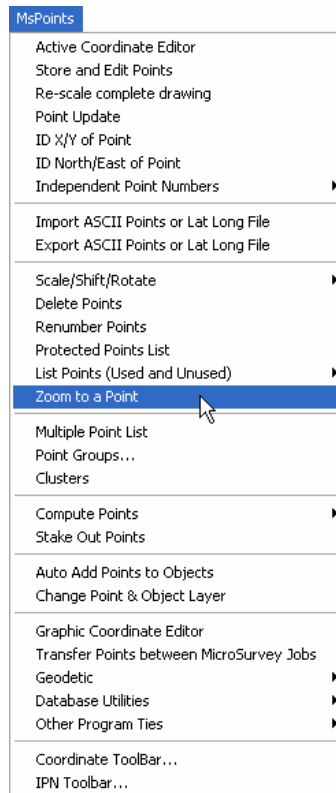
*\* Be sure to Thaw all layers, turn all layers On and Unlock all Layers before continuing!*

## MSCAD 2005

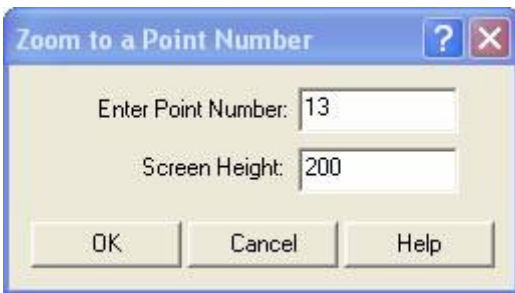
### Zooming to see the entire drawing:

With the drawing open in model view:

Type in the command ZOOM on the command line, or pick it from this menu:




Fill out the dialogue box. Type in a known point number and enter how many meters or feet of the drawing you wish to be visible.



As shown above, point 13 will be centered on the screen with 100 feet/meters above and 100 feet/meters below the point displayed on screen.

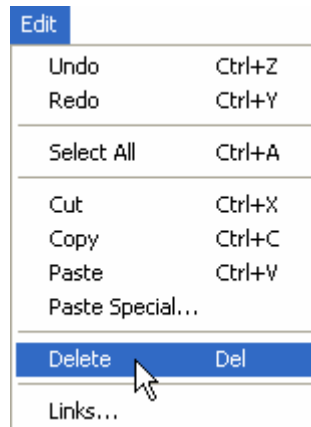
Once you see your drawing again, zoom back until you can see *everything* you need to keep.

You can do this by picking the Zoom Minus button a few times  or by rolling the mouse wheel out.

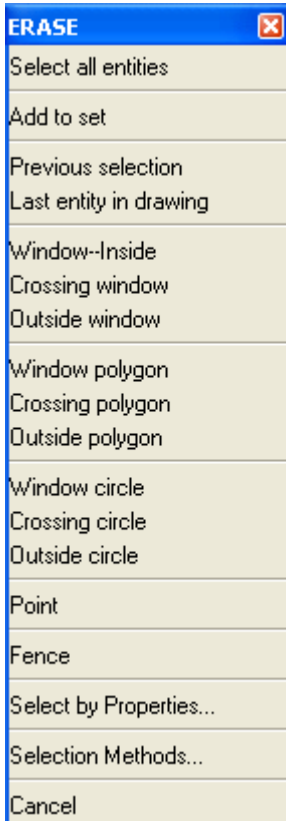
*\*Remember, you can hit escape at any time if you need to start again.*

## Erasing the Unwanted Points:

Type in either ERASE or DELETE on the command line or pick the DELETE command from this menu:

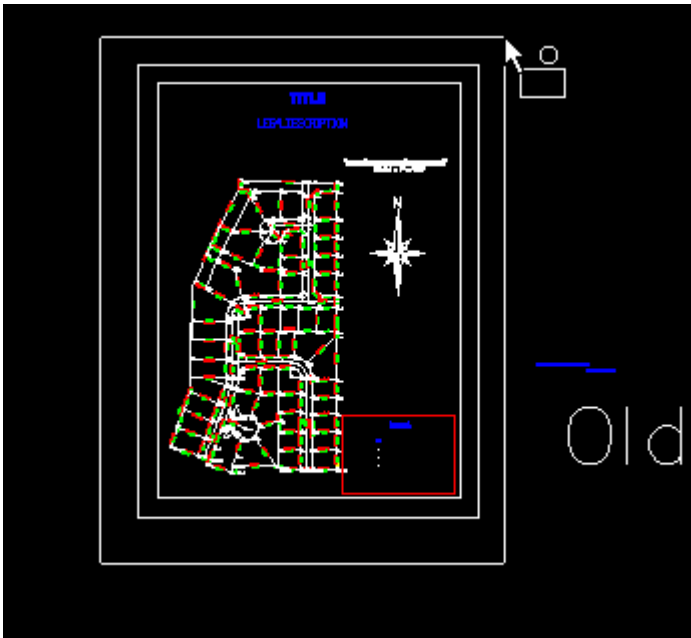


Select the "Outside Window" option from this floating menu:

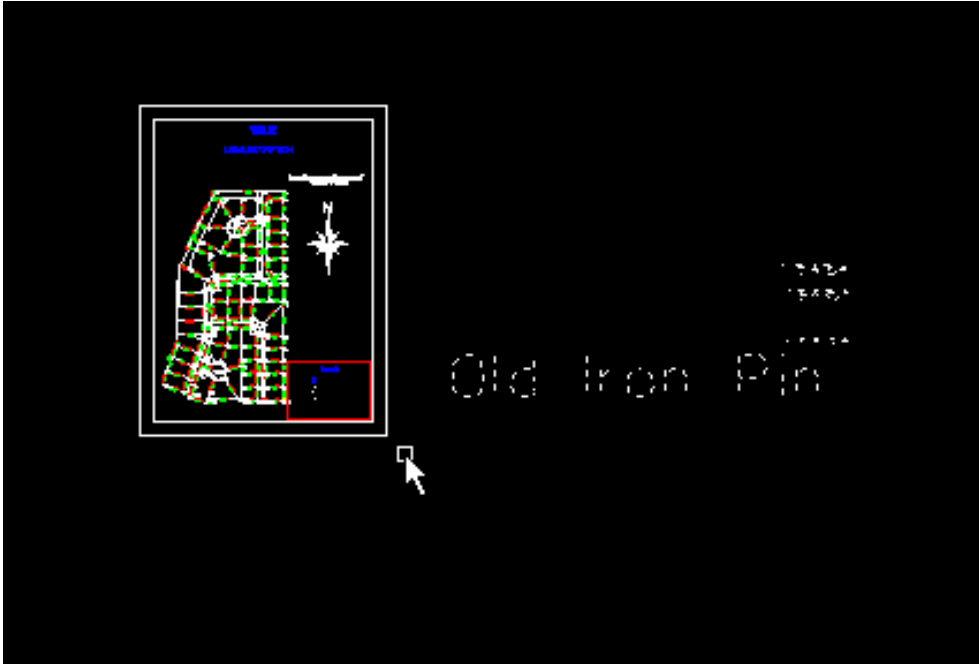


If you do not see this floating menu on your screen (because you turned this option off previously), you can type in the letter O on the command line and press enter once.

Take your mouse and Window the entire drawing you want to keep, by picking outside the valid drawing entities in the top left corner of the screen and then the bottom right corner of the screen.



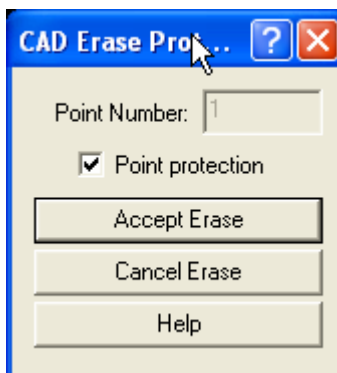
These parts will remain their normal colour, being as they are not selected, and everything outside the window will be selected.



*\*Remember, you can hit escape at any time if you need to start again.*


Make sure you've got everything you need to keep unselected (so what you are deleting is either shown on screen as still being selected or off screen and can't be seen) and hit "Enter" to complete the operation. Everything outside of the window you selected will be erased from the drawing!

If there were survey points being erased and you had Point Protection turned on, then you will see the following dialog box come up:

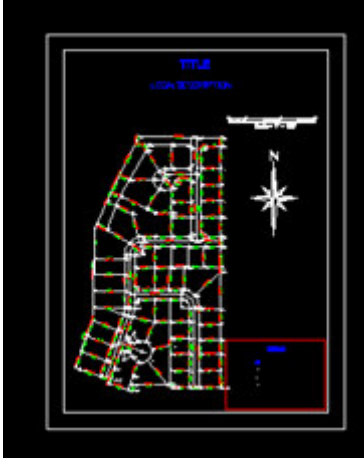


You can pick on the checkmark for Point Protection, to turn it off, and then pick Accept Erase, and any and all survey points that were still selected, will be erased from the drawing and database.

If you pick Cancel Erase, the survey points will remain in the drawing and database and you have not solved your zooming issue as those points will still be out on Mars.

-Zoom to Extents by picking this button   
-or type in ZOOM on the command line, press enter and then type in E and press enter again,

And you should now see your entire drawing on screen:

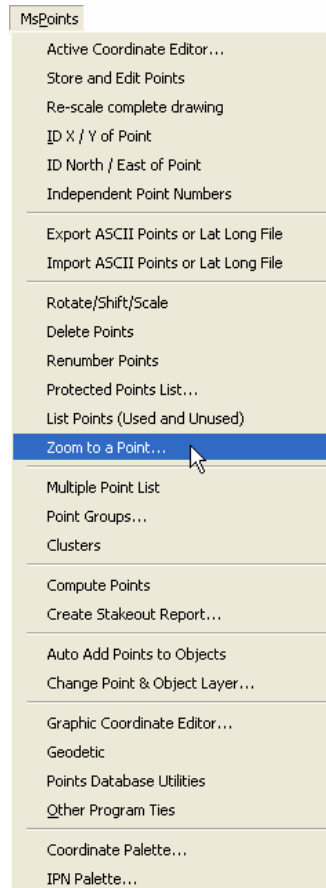


## MSCAD 2004

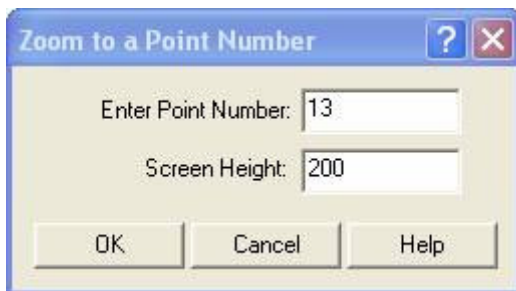
### Zooming to see the entire drawing:

With the drawing open in model view:

Type in the command ZOOM on the command line, or pick it from this menu:




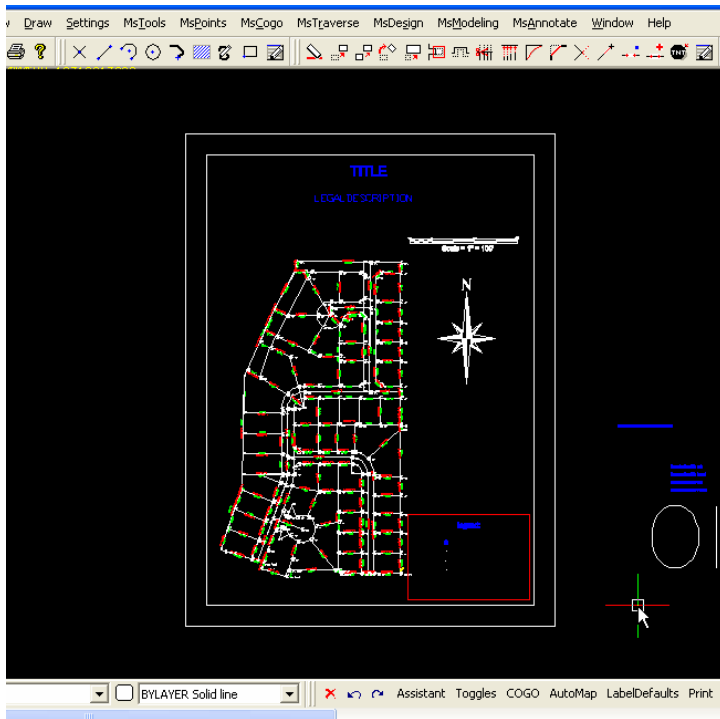
Fill out the dialogue box. Type in a known point number and enter how many meters or feet of the drawing you wish to be visible.



As shown above, point 13 will be centered on the screen with 100 feet/meters above and 100 feet/meters below the point displayed on screen.

Once you see your drawing again, zoom back until you can see *everything* you need to keep.

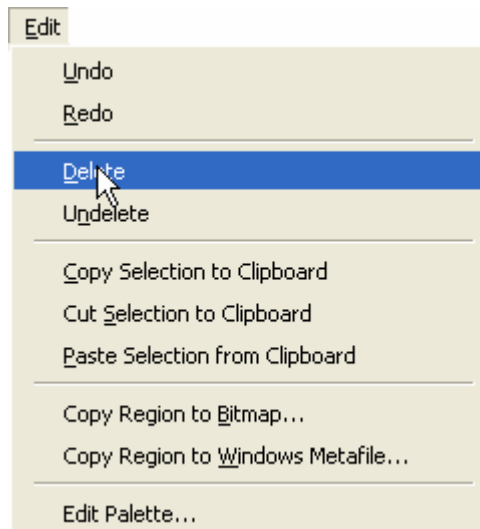
You can do this by picking the Zoom Minus button a few times  or by rolling the mouse wheel out.



*\*Remember, you can hit escape at any time if you need to start again.*

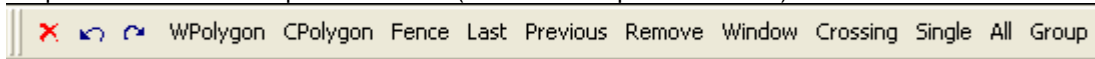
## Deleting the Unwanted Points:

Type in either ERASE or DELETE on the command line or pick the DELETE command from this menu:



Type in **ALL** and Press **ENTER ONCE** (and only once at this stage)

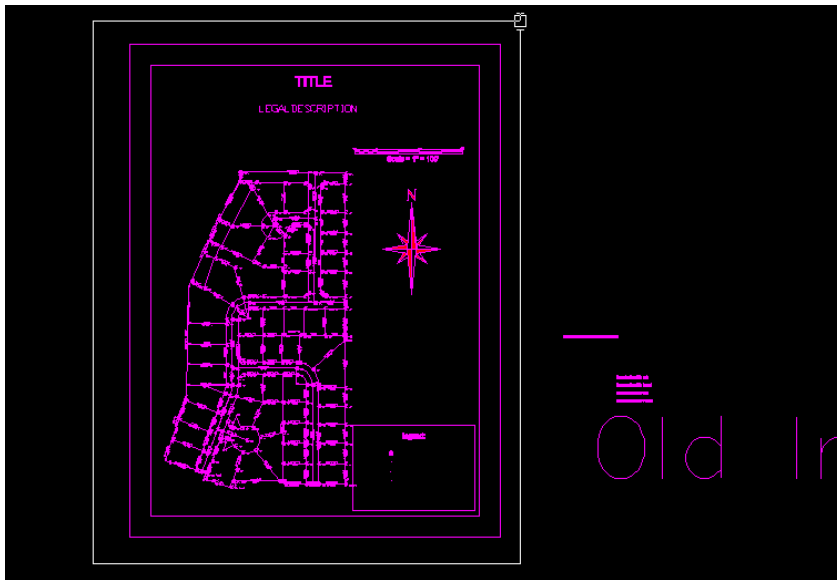
Or pick **ALL** from the Option Toolbar: (and do **NOT** press ENTER)



Then either type in **R** and press **ENTER ONCE** (and only once at this stage)

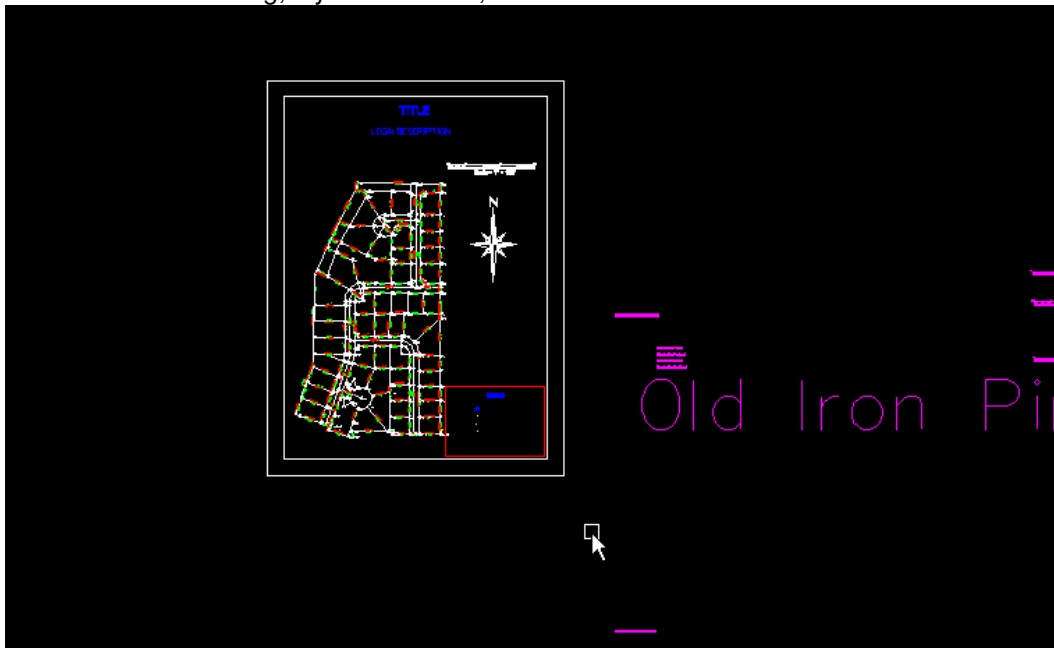
Or choose the option **Remove** from the Options Toolbar: (and do **NOT** press ENTER)

Take your mouse and Window the entire drawing you want to keep, by picking outside the drawing in the top left corner of the screen and then the bottom right corner of the screen.



These parts will return to their normal colour:

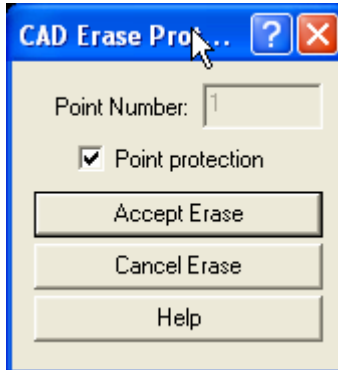
The rest of the drawing, if you can see it, will remain in the selected mode colour.






Make sure you've got everything you need to keep unselected (so what you are deleting is either shown on screen as still being selected or off screen and can't be seen) and hit "Enter" to complete the operation. Everything outside of the window you selected will be erased from the drawing!

If there were survey points being erased and you had Point Protection turned on, then you will see the following dialog box come up:



You can pick on the checkmark for Point Protection, to turn it off, and then pick Accept Erase, and any and all survey points that were still selected, will be erased from the drawing and database.

If you pick Cancel Erase, the survey points will remain in the drawing and database and you have not solved your zooming issue as those points will still be out on Mars.

Zooming to Extents by picking this button  or by typing in ZOOM on the command line, press enter and then type in E and press enter again, should now show your entire drawing on screen:

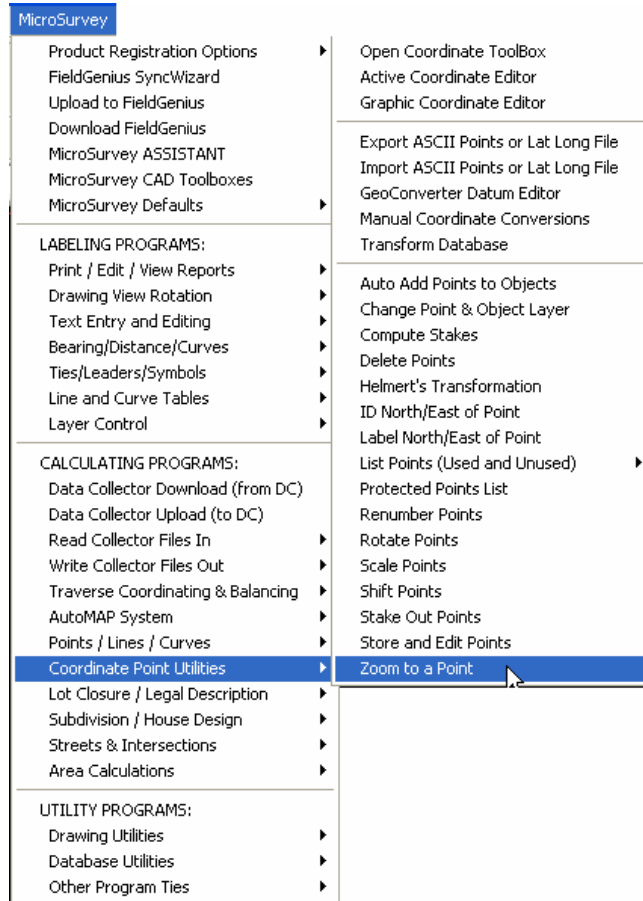


# MSCAD 2002

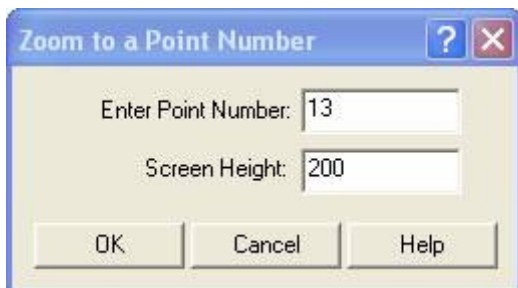
## Zooming to see the entire drawing:

With the drawing open in model view:

Type in the command ZOOM on the command line, or pick it from this menu:




Fill out the dialogue box. Type in a known point number and enter how many meters or feet of the drawing you wish to be visible.



As shown above, point 13 will be centered on the screen with 100 feet/meters above and 100 feet/meters below the point displayed on screen.

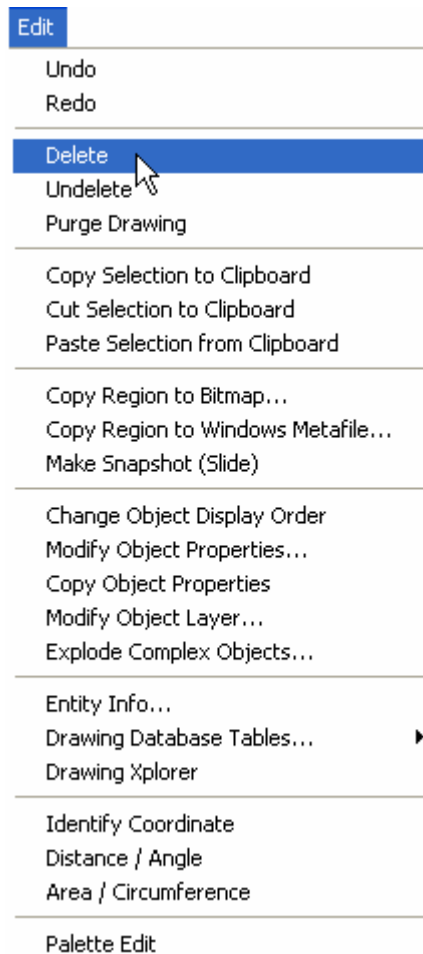
Once you see your drawing again, zoom back until you can see *everything* you need to keep.

You can do this by picking the Zoom Minus button a few times  or by rolling the mouse wheel out.

*\*Remember, you can hit escape at any time if you need to start again.*

## Erasing the Unwanted Points:

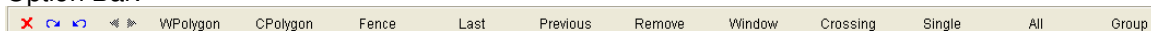
Type in either ERASE or DELETE on the command line or pick the DELETE command from this menu:



Type in ALL and Press ENTER **ONCE** (and only once at this stage)

**Or** pick ALL from the Option Bar or Option Menu (depending upon how you have your program set): (and do **NOT** press ENTER)

Option Bar:

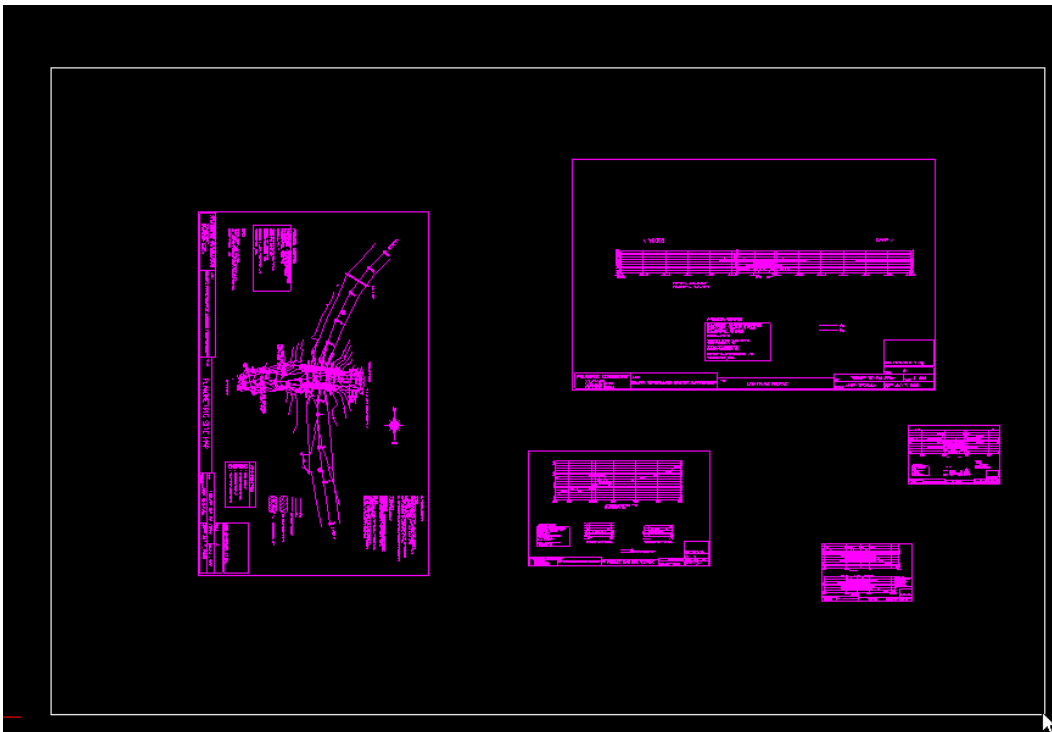


Option Menu:



Then either type in R and press ENTER **ONCE** (and only once at this stage)  
**Or** pick REMOVE from the Option Bar or Option Menu (depending upon how you have your program set): (and do **NOT** press ENTER)

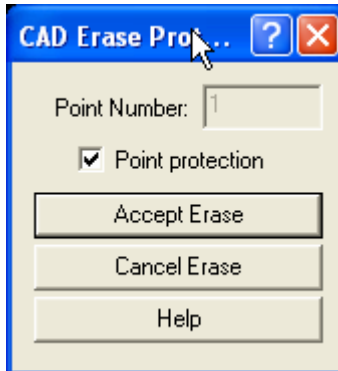
Take your mouse and Window the entire drawing you want to keep, by picking outside the drawing in the top left corner of the screen and then the bottom right corner of the screen.



These parts will return to their normal colour:  
The rest of the drawing, if you can see it, will remain in the selected mode colour.


Make sure you've got everything you need to keep unselected (so what you are deleting is either shown on screen as still being selected or off screen and can't be seen) and hit "Enter" to complete the operation. Everything outside of the window you selected will be erased from the drawing!

If there were survey points being erased and you had Point Protection turned on, then you will see the following dialog box come up:



You can pick on the checkmark for Point Protection, to turn it off, and then pick Accept Erase, and any and all survey points that were still selected, will be erased from the drawing and database.

If you pick Cancel Erase, the survey points will remain in the drawing and database and you have not solved your zooming issue as those points will still be out on Mars.

Zoom to Extents by picking this button  or by typing in ZOOM on the command line, pressing enter and then typing in E and pressing enter again, and you should now see your entire drawing on screen:

