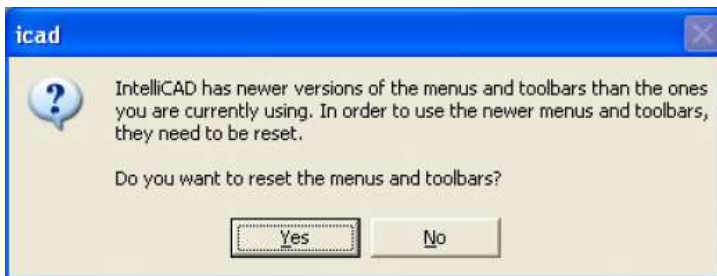


## Getting your Custom Toolbars into MSCAD2005 SP#1.0

You have taken the time to create your own Toolbars in MSCAD2005 and now that we have a Service Patch out (SP#1.0) – you need to know how to move them forward so you don't have to redo them.

*(You have not created your own custom toolbars? It is so easy to do and we have a movie in the help file to show you how – please check it out as it can help optimize how you work and save you time! Wait until after SP#1.0 is installed if you are just getting to it now)*

The first thing to do is **install SP1.0** and do the following steps! The first time you run the program after applying the service pack, you will see the following message:

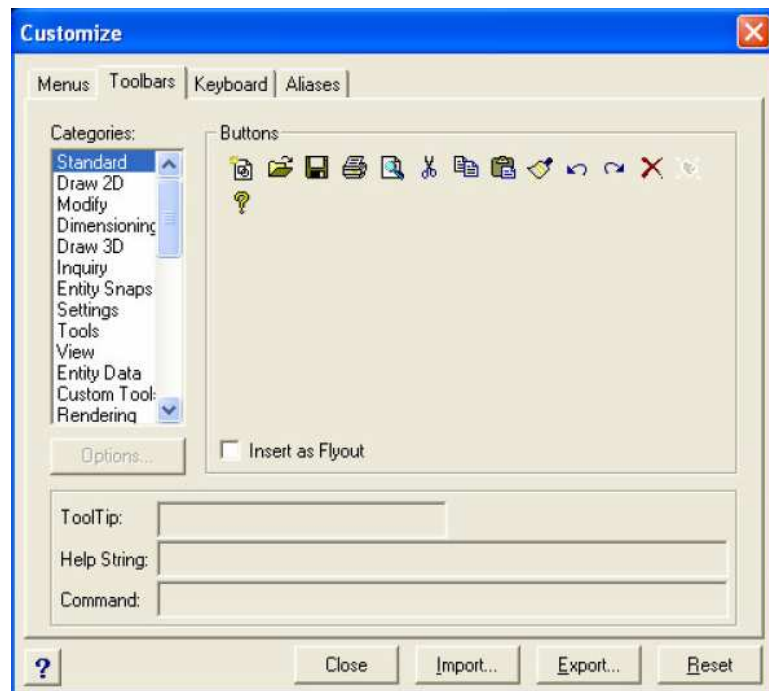


**Do not press yes, press NO.**

## Export Toolbars:

1) Go to the CAD Tools menu in MSCAD2005 and pick on the command Customize. Pick on the Toolbars tab. You will see this dialog once you do:

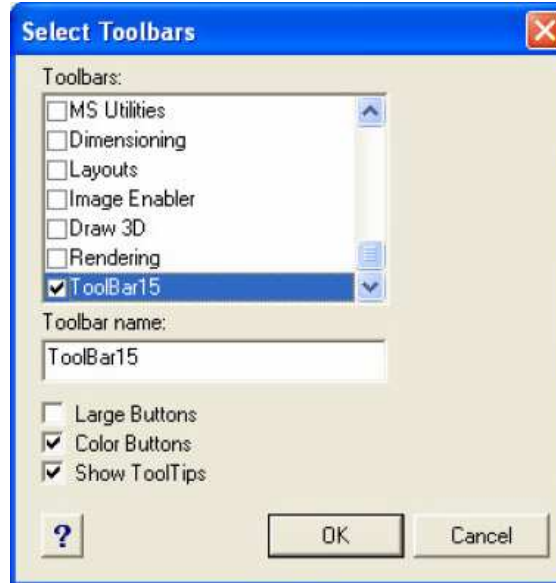
2) Pick on the Export button near the bottom right of the dialog to bring up the next dialog.



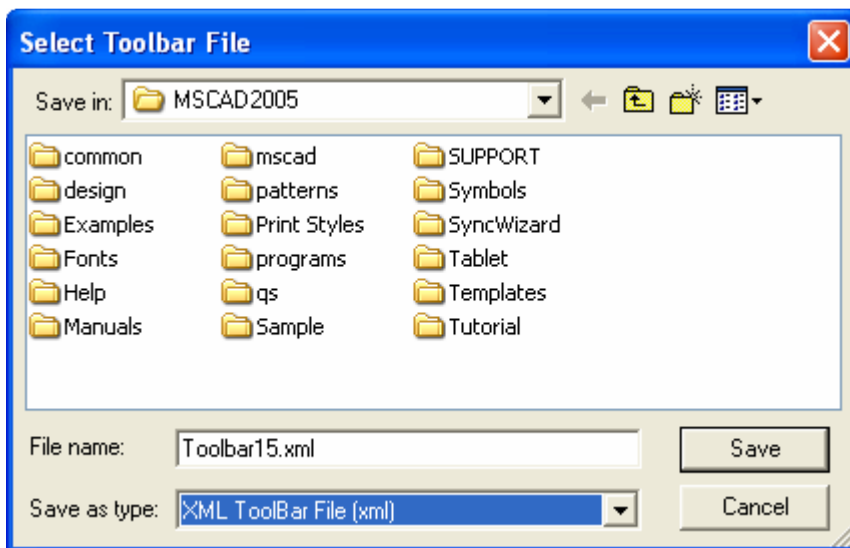
3) Your toolbar(s) will normally be at the bottom of the list. Scroll to the bottom to see your custom toolbar(s).

In this example my custom toolbar is called ToolBar15. Pick on the toolbar name to ensure it is placed in the white bar below the words Toolbar Name: - then pick the OK button to continue.

(You can only export 1 toolbar at a time so if you have more than one, repeat these steps for the second and subsequent toolbars.)



4) At the bottom of the next dialog, be sure to change the “Save As Type” to “XML ToolBar File (XML)” You can then enter the name of the ToolBar file to save and the location to save it in. Saving it in your MSCAD2005 folder is fine and the name can be anything you wish. I have used the name Toolbar15.XML in my example. (You do not have to type in the .XML as it will be added automatically when saved.)



Pick on SAVE to complete the command. Then you can close the previous dialog. Your Custom toolbar is now saved to the file name you gave it in the folder you specified.

## Reset Toolbars:

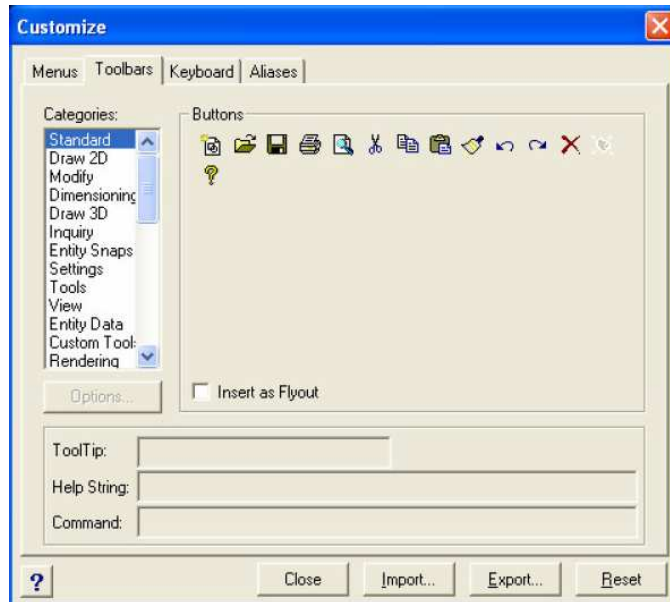
You can now safely reset your toolbars so they have the latest changes that have been implemented for service pack. On the customization dialog that you used to export the

toolbars, press the Reset button.

## Import Toolbars:

Now to load your custom toolbar(s) back in again, we need to do the following.

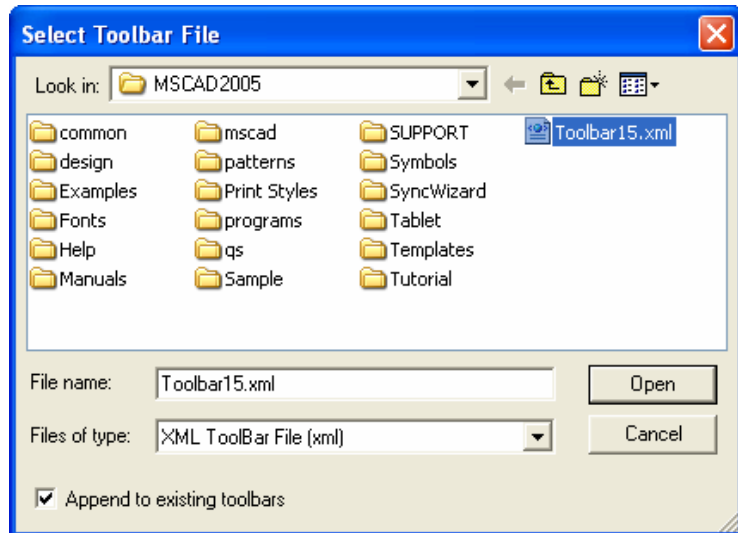
1) Go to the CAD Tools menu and pick on the command Customize. Pick on the Toolbars tab. (yes this is the same step we started with at the top of this note)



2) This time pick on the IMPORT button.

Set the Files Of Type to “XML ToolBar File (xml)” and locate and pick the file you created in the above steps. Then pick on OPEN to finish the command.

That should do it! Your custom toolbar should now appear on your screen so you can dock them as desired.



(You can only import 1 toolbar at a time so if you have more than one, repeat the steps for the second and subsequent toolbars.)

**NOTE 1:** If you wish to load the same custom toolbar(s) onto a different machine, start by copying it to that machine. Then just do the import option from above, and it will work for you. Be sure to have SP#1.0 already installed on the second machine before importing the toolbars.

**NOTE 2:** If you are working with MSCAD2005 SP#1.1, SP#1.2 or SP#1.3 already loaded on your machine and you are simply copying the custom toolbar(s) to another machine (or backing them up for safe keeping), you do not need to worry about the resetting of any of the menus. Just follow the Export and Import steps as appropriate.

Glen W. Cameron, C.E.T.  
Technical Support Manager