


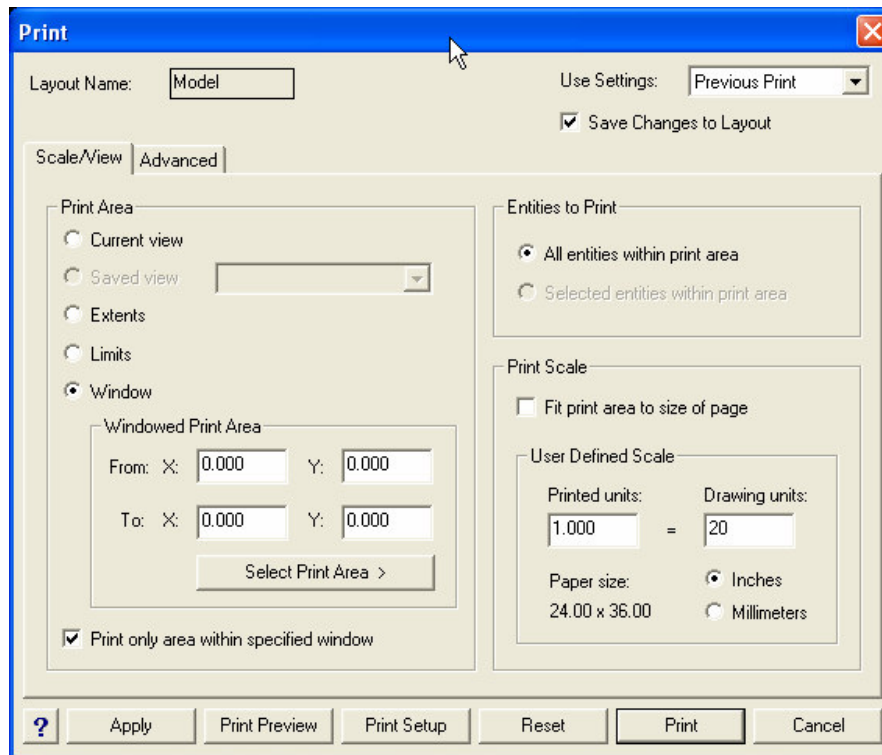
Printing / Plotting in MSCAD2005

Printing has changed from some of our previous versions of MSCAD. Below is a quick overview of how to quickly and easily print or plot your drawing in MSCAD2005.

To print the current drawing, go to the File pull down menu and pick on PRINT.

Or you can pick on this button on the toolbar 

Either way, this is the dialog you will see:



SCALE/VIEW: PRINT AREA

Select the area of the drawing you want to print:

- Current view: will print what was on your screen right when you hit print.
- Saved view: will print any viewports you have saved in your drawing.
- Extents: will print the entire drawing area, zooming in or out as required.
- Limits: will print only what appears inside the rectangular area specified by the LIMITS command.
- Window: will let you specify a rectangular area to print, either by entering the X,Y coordinates of the top-left and bottom-right corners, or by

pressing the “Select Print Area” button to window a box around the area you want to print.

SCALE/VIEW: PRINT SCALE

If you want your drawing to fill the page you are printing to, then check the box that says “Fit print area to size of page”. If you want to specify a specific scale, enter your scale here.

SCALE/VIEW: ENTITIES TO PRINT

Choose “All entities within print area”.

ADVANCED: PRINT STYLE TABLE (PEN ASSIGNMENTS)

Select a Print Style Table here to change how your drawing appears when you print it. You can either use one of the pre-defined Print Style Tables included with MSCAD2005, or you can create your own. Use ICAD.CTB to print in color, or MONOCHROME.CTB to print in black and white.

There are two types of print style tables, Color Dependent Print Style Tables (.CTB) and Named Print Style Tables (.STB). If the STB files are listed, and you want to convert your drawing to use CTB files for color-dependent printing, press Cancel then type the command CONVERTPSTYLES into the commandline area.

ADVANCED: PRINT OPTIONS

Make sure Print Lineweights is turned on if you want to print your lines using the lineweights they have been assigned in the drawing.

ADVANCED: PRINT OFFSET

You can either center your drawing on the paper here, or assign your own custom margin offsets.