

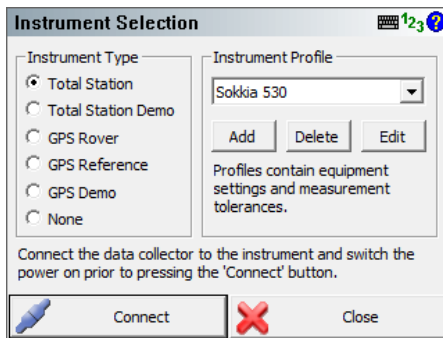
SOKKIA SERIES 30R

SET230R3, SET330R3, SET530R3, SET230R, SET330R, SET530R, SET630R

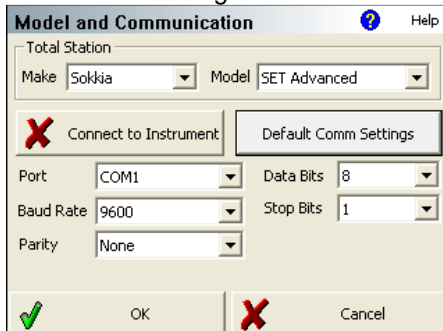
Procedure

1. Turn on the instrument
2. Level the instrument
3. On your instrument press ESC to exit to the main menu
4. Press F4 (CNFG)
5. Press the down arrow to highlight Comms setup and press Enter.
6. Verify that the communication parameters match the following:

Baud rate:	9600bps
Data bits:	8bit
Parity:	Not set
Stop bit:	1bit
Check sum:	No
Xon/Xoff:	No
7. Press ESC to go back to the Config screen
8. Press ESC to go back to the Main menu
9. Press F1 (MEAS) to go to the Measure screen
10. In FieldGenius start or open an existing project. Press the Main Menu button → Settings → Instrument Settings. On the Instrument Settings screen, select **Total Station**.
11. Create a new profile by selecting Add, entering a name, picking Save, and finally picking Edit:



12. Match the following on the Model and Communication screen:



- Use Com 1 if you are using a cable.
- If you have a Windows mobile Device with Bluetooth, select Bluetooth at the top of the Ports list and follow the directions to set up a partnership.
- If you have a different device with Bluetooth, check your device documentation for a method of setting up a partnership. Verify the Com port that is being emulated, and set that com port in this dialog.

Quick Start Guide

13. Specify the EDM settings you want to use on the EDM Settings screen.

EDM Settings

Mode: IR Fine

Time Out(s): 10

Use Default

Minimum: 0'

Maximum: 32808'

Guide Light: High

Prism Offsets (mm)

Foresight: 0.0

Backsight: 0.0

Set Instrument

Reflectorless Settings

Std Dev:

OK Cancel

**Note: with EVR 4.1, reflectorless mode would not show up if user connects to the instrument using the Model and Communication menu. User will need to disconnect/reconnect using Instrument toolbar via Instrument icon in Mapscreen.

14. Specify the tolerances you want to use on the Tolerance Settings screen.

Measurement Tolerance

Horizontal Angle Tolerance (sec): 30.0

Vertical Angle Tolerance (sec): 30.0

Distance Tolerance: 0.03'

OK Cancel

15. There is nothing to set on the Search Settings screen.

Search Settings

Search Mode: None

Search Window Range

Horizontal: 30°00'00"

Vertical: 30°00'00"

Measure

Search Window Center

Horizontal: 0°00'00"

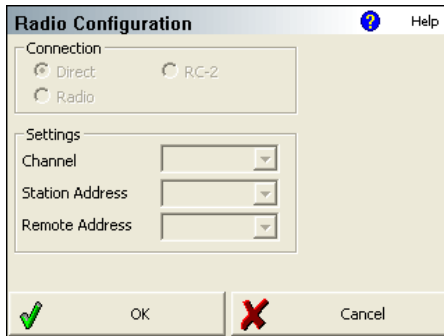
Vertical: 90°00'00"

Measure

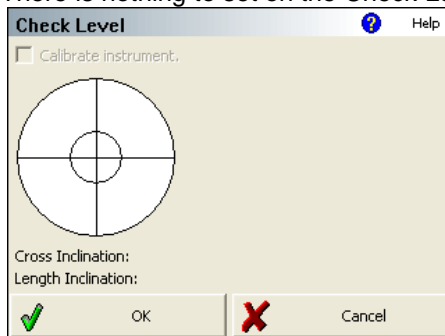
OK Cancel

16. There is nothing to set on the Radio Configuration screen.

Quick Start Guide



17. There is nothing to set on the Check Level screen.



18. Switch back to the Model and Communication screen. Press the Connect to Instrument button and if you successfully connect you will see a green check mark. Have fun!