

Leica TCA 1100 (GeoCOM)

Firmware: GSI Version 2.28a
FieldGenius: FieldGenius 2007 v3.0.1

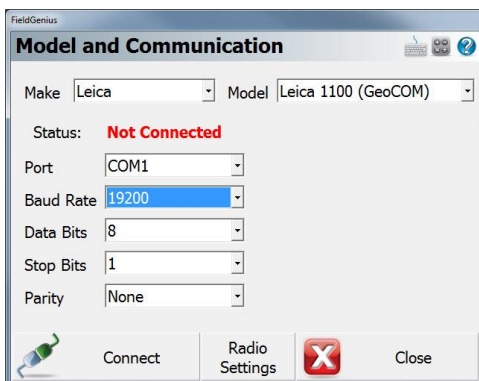
Procedure

1. Turn on the instrument
2. Level the instrument
3. On your instrument's main menu screen press **F3 (CONF)**
4. Select menu item **4, GeoCOM Communication param**
5. Verify that the communication parameters match the following:

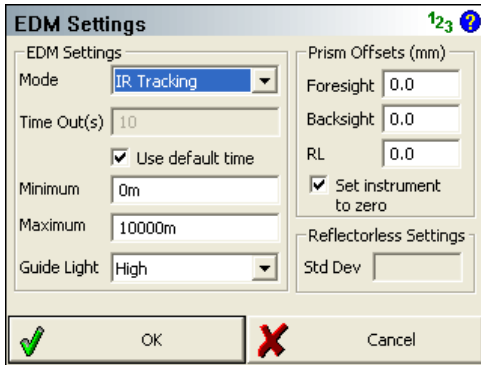
Baud Rate: 19200
Protocol: GeoCOM
Parity: No
Terminator: CR LF
Data Bits: 8
Stop Bits: 1

Then press **CONT** to return to the Main Menu.

6. On the instrument's main menu screen press **F1 (EXTRA)**
7. Select menu item **1, Online mode (GeoCOM)**
8. At the prompt "Do you want to switch?" select **F5 (Yes)**.
9. Your instrument will now be in GeoCOM mode. If you're surveying robotically, you have to keep your instrument in this mode for the entire duration of the survey. If you're connecting directly to the instrument, after you've connected FieldGenius and initialized it with the instrument, you can exit the GeoCOM mode.
10. In FieldGenius start or open an existing project. Press the Main Menu button > Settings > Instrument Selection. On the Instrument Selection screen, select **Total Station**.
11. Match the following on the **Model and Communication** screen.



12. Specify your **EDM Settings** and Prism Offsets as desired.



EDM Settings 123 ?

EDM Settings

Mode: IR Tracking

Time Out(s): 10

Use default time

Minimum: 0m

Maximum: 10000m

Guide Light: High

Prism Offsets (mm)

Foresight: 0.0

Backsight: 0.0

RL: 0.0

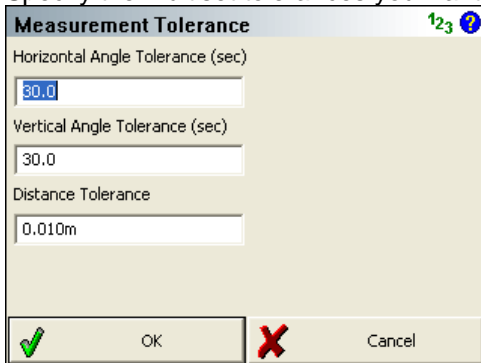
Set instrument to zero

Reflectorless Settings

Std Dev:

OK Cancel

13. Specify the multiset tolerances you want to use on the **Tolerance Settings** screen.



Measurement Tolerance 123 ?

Horizontal Angle Tolerance (sec)

30.0

Vertical Angle Tolerance (sec)

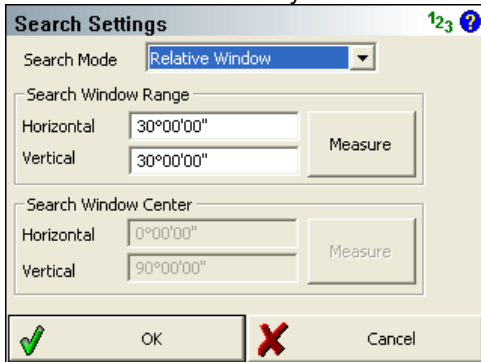
30.0

Distance Tolerance

0.010m

OK Cancel

14. Specify your search settings as desired on the **Search Settings** screen. If your instrument has Power Search then you can select on of the PS (Power Search) modes.



Search Settings 123 ?

Search Mode: Relative Window

Search Window Range

Horizontal: 30°00'00"

Vertical: 30°00'00"

Measure

Search Window Center

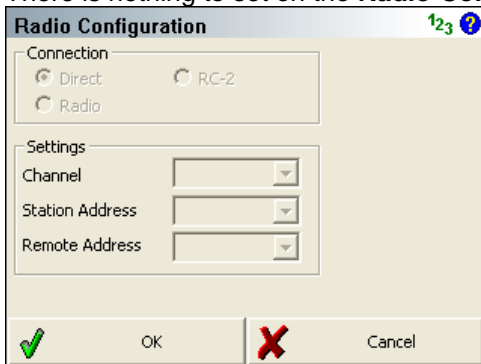
Horizontal: 0°00'00"

Vertical: 90°00'00"

Measure

OK Cancel

15. There is nothing to set on the **Radio Configuration** screen.



Radio Configuration 123 ?

Connection

Direct RC-2

Radio

Settings

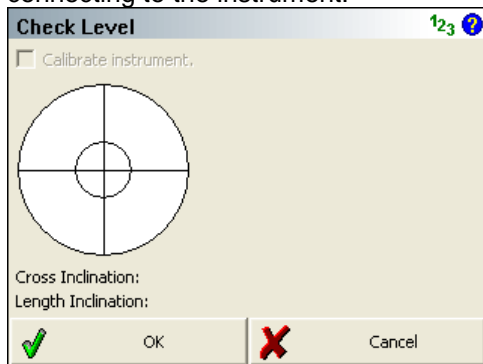
Channel:

Station Address:

Remote Address:

OK Cancel

16. There is nothing to set on the **Check Level** screen. You will see this screen when you try connecting to the instrument.



17. Switch back to the **Model and Communication** screen. Press the **Connect to Instrument** button and if you successfully connect you will see a green check mark on the Connect to Instrument button, and the Check Level screen will appear. Have fun!