

Topcon GPT-9003A & FC-2200 (Direct)

Requires FieldGenius 2008 v4.0.0 or newer.

Configure the GPT-9003A for a Direct Connection

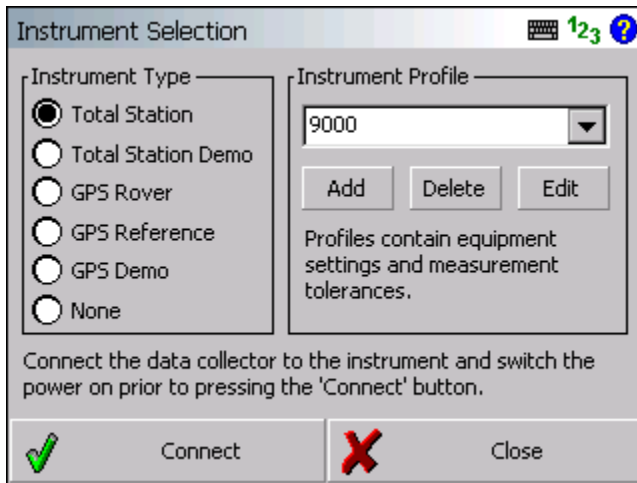
Confirm the Settings

1. From the Desktop screen, double tap the "Standard Meas" icon to start the Topcon instrument software.
2. Press SETUP
3. Press COMMUNICATION
4. Press COMMON PARAMATER.
 - RECKey Data Out = RS232C
 - NEZ REC FORM = STANDARD
 - REC TYPE = REC-B
 - TRK STATE = OFF
 - REC KEY (Automatic Collimation) = ON
 - Press SET to save changes
5. Press RS-232C ---OR--- 5. Press BLUETOOTH
 - BAUD RATE = 9600
 - DATA LENGTH = 8BIT
 - PARITY BIT = NON
 - STOP BIT = 1BIT
 - Press NEXT for page 2/2
 - CR.LF = OFF
 - ACK MODE = OFF
 - Press SET to save changes.
5. Press BLUETOOTH
 - CR.LF = OFF
 - Press PIN CODE SET
 - PIN CODE = 1111
 - PIN CODE CHECK = OFF
 - Press SET to save changes
 - Press SET to save changes
6. Press EXIT twice to return to the screen in Step 1.

Start External Link Mode

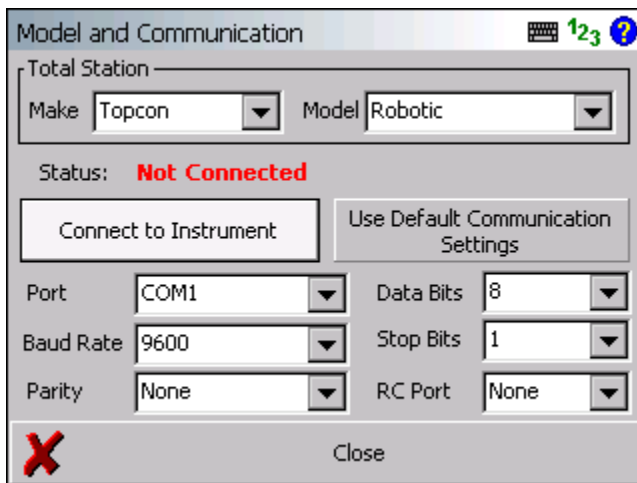
1. Press PROG
2. Press EXT Link
3. Press RS232C ---OR--- 3. Press BLUETOOTH
 - BAUD RATE = 9600
 - DATA LENGTH = 8BIT
 - PARITY BIT = NON
 - STOP BIT = 1BIT
 - Press NEXT for page 2/2
 - REC TYPE = REC-B
 - TERMINATE = ETX
 - RTS = High
 - Press SET to save changes.
4. Press Execute.
5. You will see a message "Remote control is being done from the controller." You must leave the instrument in External Link mode while using FieldGenius.

Configure FieldGenius on the FC-2200 Controller



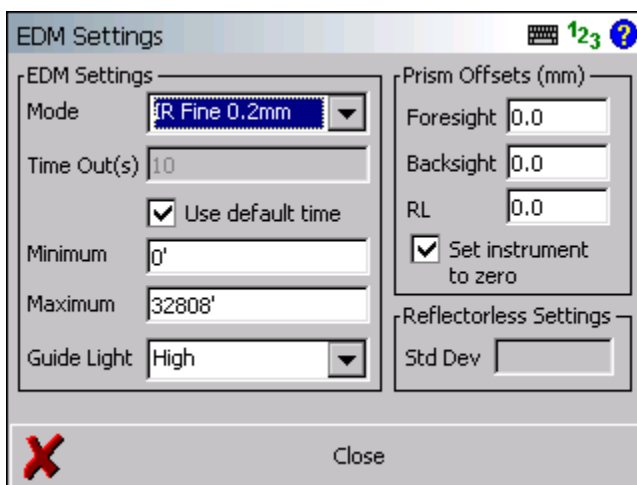
Instrument Profile

Add a profile for your Topcon 9000, then Edit it to access the instrument settings.



Model and Communication

Make = Topcon
 Model = Robotic
 Port = COM1 (for RS232 cable)
 or COM8 or COM9 (for Bluetooth)
 Baud Rate = 9600
 Parity = None
 Data Bits = 8
 Stop Bits = 1
 RC Port = None



EDM Settings

Select your desired default EDM Mode and other EDM Settings.

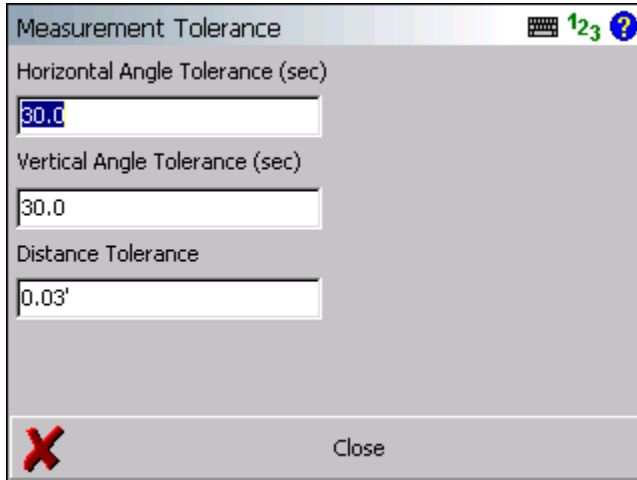
Prism Offsets

Enable the “Set instrument to zero” option, and enter your prism offsets as appropriate.

Please be sure to measure a known baseline to confirm your prism offsets.

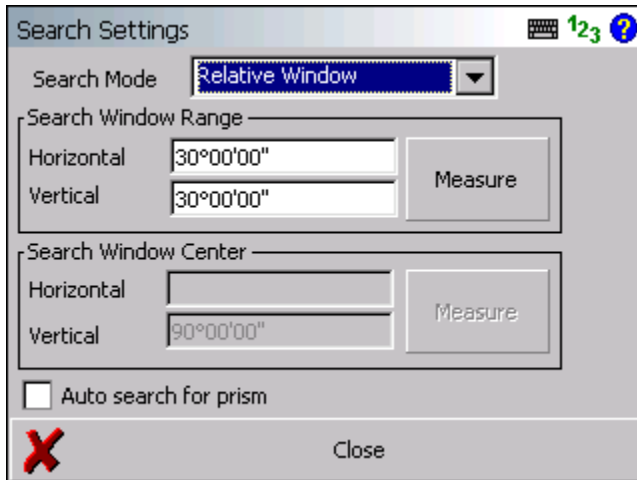
Reflectorless Settings

Not applicable.



Tolerance Settings

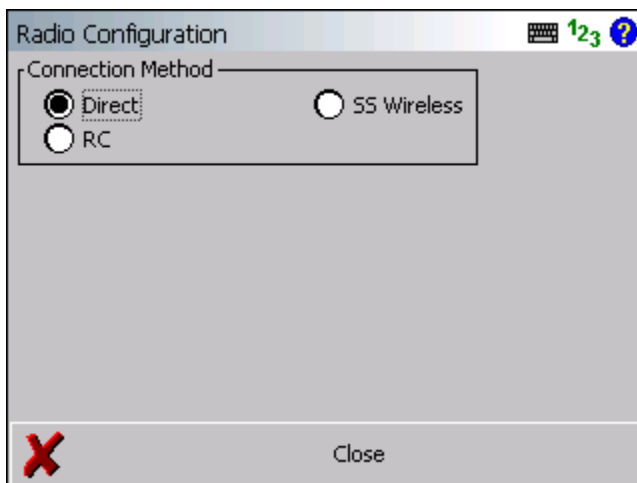
Specify your desired multiset tolerances, or leave the default values.



Search Settings

Specify your desired search mode.

Enable the Auto search for prism option if desired, to force a prism search when you take a measurement while not locked onto the prism.



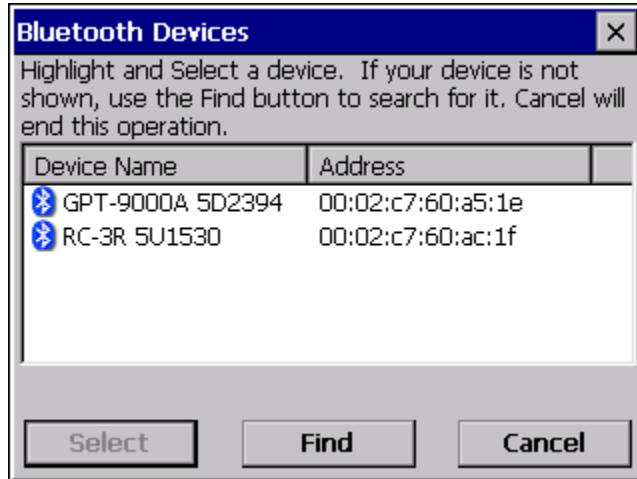
Radio Settings

Connection Method = Direct

Bluetooth Connection Manager on the FC-2200 Controller

If you have specified either COM8 or COM9 as any of your communications ports, then when you press the “Connect” or “Connect to Instrument” buttons in FieldGenius, the FC-2200’s Bluetooth Manager will automatically appear.

Depending on settings in the total station, it may discover up to two devices:



GPT-9000A

This is the total station, and you would want to select it if using a direct (non-robotic) connection.

RC-3R

This is the RC unit, and you would want to select it if using a robotic connection.

If you do not see the required device, press the Find button to discover any nearby Bluetooth devices. You may also see various other devices listed depending on what else is in range of the FC-2200 controller, so just ignore anything else that you don’t want to use.

Highlight the name of the device you want to connect to then press the Select button.

Tip: To conserve battery power, disable Bluetooth on any devices that you will not be connecting with via a Bluetooth connection.